

OUR REFERENCES



YOUR TOTAL SOLUTION

BAR STOCK | FORGING | CASTING
MACHINING | HEAT TREATMENT | PLATING



AYUSHI
ENGINEERING PVT. LTD.

UNIT - I (Reg. Office)

Survey No. 26, Plot No. 6,7&10,
Shapar Village Road, Shapar - 360 024,
Dist. Rajkot. (Guj.) India.

Tele : +91 2827 - 252202 / +91 2827 - 252799

E-mail : info@ayushieng.com

Web : www.ayushieng.com

UNIT - II

Survey No. 26, Plot No. 1,
Shapar Village Road,
Shapar - 360 024,
Dist. Rajkot. (Guj.) India.

UNIT - III

Survey No. 26, Plot No. 8,
Shapar Village Road,
Shapar - 360 024,
Dist. Rajkot. (Guj.) India.

AN ISO 9001:2015 & IATF 16949 : 2016 CERTIFIED COMPANY

- STAR EXPORT HOUSE RECOGNIZE FROM GOVERNMENT OF INDIA.
- RECOGNITION WORLDWIDE AS SAFE, SECURE AND COMPLIANT BUSINESS PARTNER.



AYUSHI
ENGINEERING PVT. LTD.

THE COMPANY

Ayushi Engineering was established in 2003 in the western part of India. Ayushi Engineering Pvt. Ltd. is a manufacturer of Machined Components. The company is operated by professional team with an experience of more than 14 years. We proudly stand amongst the leading manufacturer of machined components in India. Exports to more than 20 countries with an Overseas Sales office in Singapore.

Team Ayushi has rich technical experience which enables us to manufacture complex machined components in wide range of metals (ferrous and nonferrous).

OUR CAPABILITIES

- CNC Turning • VMC Machining • External Grinding • Internal Grinding • Milling
- Broaching • Lapping • Burnishing • Plating • Heat Treatment • Teeth Cutting

PRODUCTION FACILITIES

- CNC Turning Centers
- Vertical Machining Centers (3, 4, 5 Axis)
- Conventional Milling Machines
- Conventional Turning Machines
- Tapping Drill Machines
- Grinding Machines
- Vertical Broaching Machine
- Radial Drilling Machines
- Hydraulic Press
- Band saw Cutting Machines
- Air Compressors



PRODUCTS

APPLICATIONS

- Auto Parts • Gear box parts • Tractor Parts • Harvester Parts
- Transmission Parts • Elevator Parts • Switch Gear Parts
- Precision Engineering Customized Parts

MATERIAL

- Alloy Steel • Stainless Steel • Aluminium • Bronze / Brass
- Cast Iron • Ductile Iron





FACILITIES

← INFRASTRUCTURE

← DESIGN FACILITIES

← INSPECTION FACILITIES

- CMM With Scanning • 2D Height Gauge • Surface Roughness Tester • Contracer • Profile Projector
- Hardness Tester [BHN, HRC, HRB] • Air Gauging Systems • Slip Gauge Set 'O' Grade • Bench Center
- Salt Spray Chamber • Digital Micrometers • Bore Gauges • Vernier Calipers • Special Gauges • Many More...

ASSOCIATE FACILITIES

Forging : Close Die • Upset Forging • Ring Rolling | **Casting** : Sand Casting • Investment Casting • Shell Molding

Plating : Zinc Plating • Nickel Plating • Zinc Flake Coating • Blackening • Phosphating • E.D. Coating • Powder Coating

Heat Treatment : Hardening Tempering • Carburizing • Induction Hardening • Carbonitriding • Nitriding

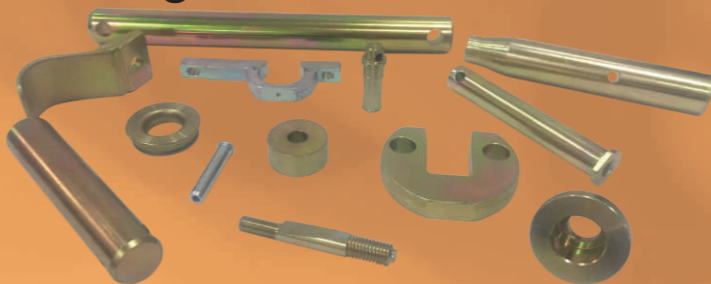
Certificates



Forging



Plating



Casting



Heat Treatment

